

Canthin-6-one Datasheet

4th Edition (Revised in July, 2016)

[Product Information]

Name: Canthin-6-one

Catalog No.: CFN98730

Cas No.: 479-43-6

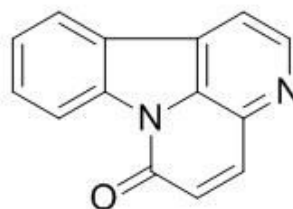
Purity: > 98%

M.F: C₁₄H₈N₂O

M.W: 220.2

Physical Description: Powder

Synonyms: 6H-Indolo[3,2,1-de][1,5]naphthyridin-6-one.



[Intended Use]

1. Reference standards;
2. Pharmacological research;
3. Food research;
4. Cosmetic research;
5. Synthetic precursor compounds;
6. Intermediates & Fine Chemicals;
7. Ingredient in supplements, beverages;
8. Others.

[Source]

The herbs of *Ailanthus altissima*.

[Biological Activity or Inhibitors]

Canthin-6-One alkaloids has cytotoxicities by ailanthus altissima plant cell cultures.^[1]

Two canthin-6-one alkaloids have antibacterial activity from allium neapolitanum.^[2]

Canthin-6-one of Simaba ferruginea A. St-Hil. has anti-ulcer activity in animal models.^[3]

Canthin-6-one has antiproliferative effects, possibly by interfering with the G2/M transition, the proapoptotic effects may result from this disturbance of the cell cycle.^[4]

[Solvent]

Chloroform, Dichloromethane, Ethyl Acetate, DMSO, Acetone, etc.

[HPLC Method]^[5]

Mobile phase: Acetonitrile- H₂O=55: 45 ;

Flow rate: 1.0 ml/min;

Column temperature: Room Temperature;

The wave length of determination: 371 nm.

[Storage]

2-8°C, Protected from air and light, refrigerate or freeze.

[References]

[1] Anderson L A, Harris A, Phillipson J D. *J. Nat. Prod.*, 1983, 46(3):374-8.

[2] O'Donnell G, Gibbons S. *Phytother. Res.*, 2007, 21(7):653-7.

[3] Almeida E S D S, Filho V C, Niero R, *et al. J.Ethnopharmacol.*, 2011, 134(3):630-6.

[4] Dejos C, Voisin P, Bernard M, *et al. J. Nat. Prod.*, 2014, 77(11):2481-7.

[5] Tan S, Yuen K H, Chan K L. *Planta Med.*, 2002, 68(4):355-8.

[Contact]

Address:

S5-3 Building, No. 111, Dongfeng Rd.,
Wuhan Economic and Technological Development Zone,
Wuhan, Hubei 430056,
China

Email: info@chemfaces.com**Tel:** +86-27-84237783**Fax:** +86-27-84254680**Web:** www.chemfaces.com**Tech Support:** service@chemfaces.com