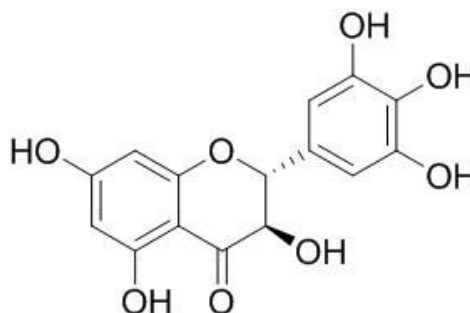


**CERTIFICATE OF ANALYSIS**

## Ampelopsin

[ **Catalog No.** ] CFN98326[ **CAS No.** ] 27200-12-0[ **Purity** ]  $\geq 98\%$ [ **M.F** ]  $C_{15}H_{12}O_8$ [ **Physical Description** ] Powder[ **Solvent** ] Chloroform, Dichloromethane, Ethyl Acetate, DMSO, Acetone, etc.[ **Weight** ] 20mg[ **Lot No.** ] CFS202202[ **Storage** ] Protected from air and light, refrigerate or freeze(2-8 °C)[ **Intended Use** ] For laboratory use only[ **Shelf Life** ] 2 years[ **Chemical Structure** ][ **Characterization Data Summary** ]

Analytical Test	Results
Identification by $^1\text{H-NMR}$ , HPLC	Consistent with the above structure
Purity tested	$\geq 98\%$

**Authorized Signature:****Date:**