

2-Chloro-1-(5'-(prop-1-ynyl)-2,2'-bithiophen-5-yl)ethanol Datasheet

5<sup>th</sup> Edition (Revised in January, 2017)

**[ Product Information ]**

**Name:** 2-Chloro-1-(5'-(prop-1-ynyl)-2,2'-bithiophen-5-yl)ethanol

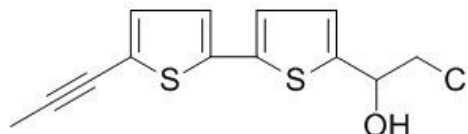
**Catalog No.:** CFN99247

**Cas No.:** 114916-00-6

**Purity:** > 95%

**M.F:** C<sub>13</sub>H<sub>11</sub>ClOS<sub>2</sub>

**M.W:** 282.8



**Physical Description:** Yellow powder

**Synonyms:** 2-Chloro-1-[5-(5-prop-1-ynylthiophen-2-yl)thiophen-2-yl]ethanol; 2-Chloro-1-(5'-(prop-1-yn-1-yl)-[2,2'-bithiophen]-5-yl)ethanol.

**[ Intended Use ]**

1. Reference standards;
2. Pharmacological research;
3. Synthetic precursor compounds;
4. Intermediates & Fine Chemicals;
5. Others.

**[ Source ]**

The herbs of *Laggera pterodonta*.

**[ Biological Activity or Inhibitors ]**

Not data available.

### **[ Solvent ]**

Chloroform, Dichloromethane, Ethyl Acetate, DMSO, Acetone, etc.

### **[ HPLC Method ]**

Not data available.

### **[ Storage ]**

2-8°C, Protected from air and light, refrigerate or freeze.

### **[ References ]**

Not data available.

### **[ Contact ]**

**Address:**

S5-3 Building, No. 111, Dongfeng Rd.,  
Wuhan Economic and Technological Development Zone,  
Wuhan, Hubei 430056,  
China

**Email:** [info@chemfaces.com](mailto:info@chemfaces.com)

**Tel:** +86-27-84237783

**Fax:** +86-27-84254680

**Web:** [www.chemfaces.com](http://www.chemfaces.com)

**Tech Support:** [service@chemfaces.com](mailto:service@chemfaces.com)