



## (20R)-Ginsenoside Rh1 Datasheet

4<sup>th</sup> Edition (Revised in July, 2016)

### [ Product Information ]

**Name:** (20R)-Ginsenoside Rh1

**Catalog No.:** CFN92796

**Cas No.:** 80952-71-2

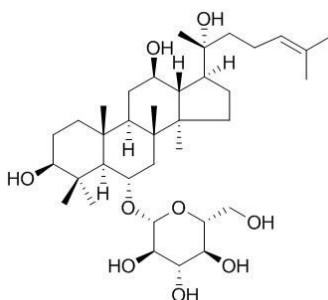
**Purity:** > 95%

**M.F:** C<sub>36</sub>H<sub>62</sub>O<sub>9</sub>

**M.W:** 638.87

**Physical Description:** Powder

**Synonyms:** (5xi,6beta,9xi,12alpha,13xi,14beta,17xi,20R)-3,12,20-trihydroxydammar-24-en-6-yl beta-D-glucopyranoside.



### [ Intended Use ]

1. Reference standards;
2. Pharmacological research;
3. Synthetic precursor compounds;
4. Intermediates & Fine Chemicals;
5. Others.

### [ Source ]

The roots of *Panax ginseng* C. A. Mey.

### [ Biological Activity or Inhibitors ]

20S, 20R ginsenoside-Rh1, isolated from *Red Ginseng*, they can inhibit the thrombin-induced conversion of fibrinogen to fibrin.<sup>[1]</sup>

## **[ Solvent ]**

Pyridine, Methanol, Ethanol, etc.

## **[ HPLC Method ]<sup>[2]</sup>**

Mobile phase: Acetonitrile- H<sub>2</sub>O, gradient elution ;

Flow rate: 1.0 ml/min;

Column temperature: 30 °C;

The wave length of determination: 203 nm.

## **[ Storage ]**

2-8°C, Protected from air and light, refrigerate or freeze.

## **[ References ]**

[1] Matsuda H, Kubo M, Tani T, *et al. Japanese Journal of Pharmacognosy*, 1985, 39:123-5.

[2] Xu J P, Sun C X, Zhuang G X, *et al. Journal of Shenyang Pharmaceutical University*, 2011(9):712-5.

## **[ Contact ]**

### **Address:**

S5-3 Building, No. 111, Dongfeng Rd.,  
Wuhan Economic and Technological Development Zone,  
Wuhan, Hubei 430056,  
China

**Email:** [info@chemfaces.com](mailto:info@chemfaces.com)

**Tel:** +86-27-84237783

**Fax:** +86-27-84254680

**Web:** [www.chemfaces.com](http://www.chemfaces.com)

**Tech Support:** [service@chemfaces.com](mailto:service@chemfaces.com)