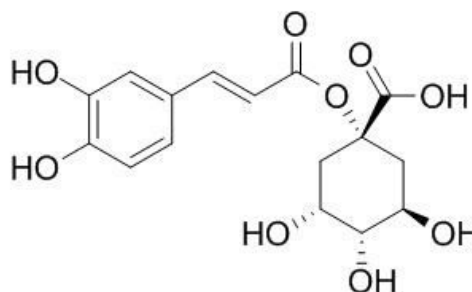


1-Caffeoylquinic acid Datasheet

4th Edition (Revised in July, 2016)

[Product Information]

Name: 1-Caffeoylquinic acid**Catalog No.:** CFN99121**Cas No.:** 1241-87-8**Purity:** > 98%**M.F:** C₁₆H₁₈O₉**M.W:** 354.31**Physical Description:** White powder**Synonyms:** 1-[(E)-3-(3,4-dihydroxyphenyl)-1-oxoprop-2-enoyl]-3,4,5-trihydroxy-1-cyclohexanecarboxylic acid.

[Intended Use]

1. Reference standards;
2. Pharmacological research;
3. Food and cosmetic research;
4. Synthetic precursor compounds;
5. Intermediates & Fine Chemicals;
6. Ingredient in supplements, beverages;
7. Others.

[Source]

The herb of *Lonicera japonica* Thunb.

[Biological Activity or Inhibitors]

Caffeoylquinic acids are the active anti-influenza components of Brazilian green propolis water extract (PWE), the findings might facilitate the prophylactic application of natural products and the realization of novel anti-influenza drugs based on caffeoylquinic acids, as well as further the understanding of cytoprotective intracellular mechanisms in influenza virus-infected cells.^[1]

Caffeoylquinic acids have inhibitory effects on monocyte migration and superoxide ion production.^[2]

[Solvent]

Pyridine, DMSO, Ethanol, Methanol.

[HPLC Method]^[3]

Mobile phase: 2.5% Acetic acid in methanol - 2.5% Acetic acid in H₂O, gradient elution;

Flow rate: 1.0 ml/min;

Column temperature: Room Temperature;

The wave length of determination: 325 nm.

[Storage]

2-8°C, Protected from air and light, refrigerate or freeze.

[References]

[1] Urushisaki T, Takemura T, Tazawa S, *et al. Evid. Based. Compl. Al. M.*, 2011, 2011(1): 1-7.

[2] Peluso G, De F V, De S F, *et al. J. Nat. Prod.*, 1995, 58(5):639-46.

[3] Adzet T, Puigmacia M. *J. Chromatogr.*, 1985, 348(01):447-53.

[Contact]

Address:

S5-3 Building, No. 111, Dongfeng Rd.,
Wuhan Economic and Technological Development Zone,
Wuhan, Hubei 430056,
China

Email: info@chemfaces.com

Tel: +86-27-84237783

Fax: +86-27-84254680

Web: www.chemfaces.com

Tech Support: service@chemfaces.com