

6-Methoxyluteolin Datasheet

4th Edition (Revised in July, 2016)

[Product Information]

Name: 6-Methoxyluteolin

Catalog No.: CFN92706

Cas No.: 520-11-6

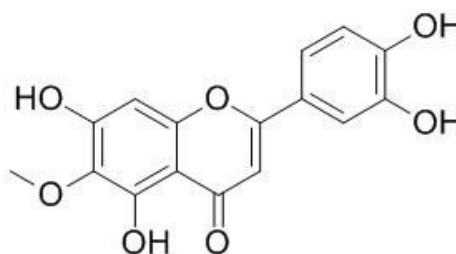
Purity: >98%

M.F: C₁₆H₁₂O₇

M.W: 316.26

Physical Description: Powder

Synonyms: 4H-1-Benzopyran-4-one, 2-(3,4-dihydroxyphenyl)-5,7-dihydroxy-6-methoxy-;
3',4',5,7-Tetrahydroxy-6-methoxyflavone; Eupafolin; Nepetin.



[Intended Use]

1. Reference standards;
2. Pharmacological research;
3. Synthetic precursor compounds;
4. Intermediates & Fine Chemicals;
5. Others.

[Source]

The flower of *Chrysanthemum zawadskii* var. *latilobum*.

[Biological Activity or Inhibitors]

6-Methoxyluteolin, isolated from *Chrysanthemum zawadskii*, it can inhibit anti-Fc γ RI β chain antibody (CRA-1)-induced histamine release, as well as elevation of intracellular calcium concentration [Ca²⁺]_i in a dose-dependent manner, it is a potent inhibitor of histamine release and calcium influx via down-regulation of the Fc γ RI β chain.^[1]

[Solvent]

Chloroform, Dichloromethane, Ethyl Acetate, DMSO, Acetone, etc.

[HPLC Method]^[2]

Mobile phase: 0.49% Citric acid in methanol – 0.49% Citric acid in acetonitrile, gradient elution;

Flow rate: 1.0 ml/min;

Column temperature: Room Temperature;

The wave length of determination: 360 nm.

[Storage]

2-8°C, Protected from air and light, refrigerate or freeze.

[References]

[1] Shim S Y, Park J R, Byun D S. *J. Microb. Biotech.*, 2012, 22(5):622-7.

[2] Geng H M, Zhang D Q, Zha J P, *et al. Chromatographia*, 2007, 66(3):271-5.

[Contact]

Address:

S5-3 Building, No. 111, Dongfeng Rd.,
Wuhan Economic and Technological Development Zone,
Wuhan, Hubei 430056,
China

Email: info@chemfaces.com

Tel: +86-27-84237783

Fax: +86-27-84254680

Web: www.chemfaces.com

Tech Support: service@chemfaces.com