

Cyclo(Phe-Leu) Datasheet

5th Edition (Revised in January, 2017)

[Product Information]

Name: Cyclo(Phe-Leu)

Catalog No.: CFN90273

Cas No.: 3354-31-2

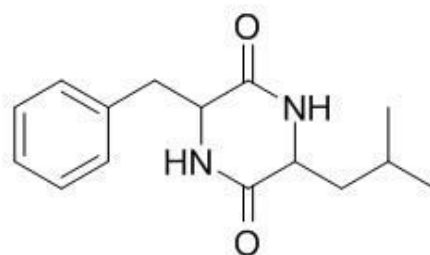
Purity: >=98%

M.F: C₁₅H₂₀N₂O₂

M.W: 260.34

Physical Description: Powder

Synonyms:.



[Intended Use]

1. Reference standards;
2. Pharmacological research;
3. Synthetic precursor compounds;
4. Intermediates & Fine Chemicals;
5. Others.

[Source]

The roots of *Rubia schumanniana* Pritzel.

[Biological Activity or Inhibitors]

Cyclo(Phe-Leu) is a new cell cycle inhibitor.^[1]

[Solvent]

Chloroform, Dichloromethane, Ethyl Acetate, DMSO, Acetone, etc.

[HPLC Method]

Not data available.

[Storage]

2-8°C, Protected from air and light, refrigerate or freeze.

[References]

[1] Han B, Li W X, Cui C B. *Journal of Shenyang Pharmaceutical University*, 2015 (2):107-10.

[Contact]

Address:

S5-3 Building, No. 111, Dongfeng Rd.,
Wuhan Economic and Technological Development Zone,
Wuhan, Hubei 430056,
China

Email: info@chemfaces.com

Tel: +86-27-84237783

Fax: +86-27-84254680

Web: www.chemfaces.com

Tech Support: service@chemfaces.com