

## Danshenol A Datasheet

4<sup>th</sup> Edition (Revised in July, 2016)

### [ Product Information ]

**Name:** Danshenol A

**Catalog No.:** CFN92167

**Cas No.:** 189308-08-5

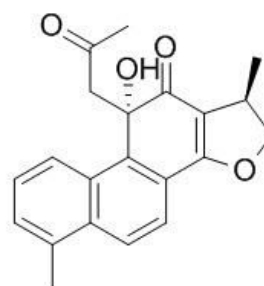
**Purity:** > 98%

**M.F:** C<sub>21</sub>H<sub>20</sub>O<sub>4</sub>

**M.W:** 336.4

**Physical Description:** Cryst.

**Synonyms:** (1R,10S)-10-hydroxy-1,6-dimethyl-10-(2-oxopropyl)-1,10-dihydrophenanthro[1,2-b]furan-11(2H)-one.



### [ Intended Use ]

1. Reference standards;
2. Pharmacological research;
3. Synthetic precursor compounds;
4. Intermediates & Fine Chemicals;
5. Others.

### [ Source ]

The roots of *Salvia miltiorrhiza*.

## **[ Biological Activity or Inhibitors ]**

Danshenol A shows strong inhibitory activity against aldose reductase isolated from the eye lens of rats.<sup>[1]</sup>

Danshenol A shows strong aldose reductase (AR) inhibitory activity, has IC<sub>50</sub> of 0.10 microM which is comparable to that of epalrestat in clinical use. <sup>[2]</sup>

## **[ Solvent ]**

Chloroform, Dichloromethane, Ethyl Acetate, DMSO, Acetone, etc.

## **[ HPLC Method ]<sup>[3]</sup>**

Mobile phase: Methanol-1% Acetic acid H<sub>2</sub>O, gradient elution ;

Flow rate: 1.0 ml/min;

Column temperature: Room Temperature;

The wave length of determination: 280 nm.

## **[ Storage ]**

2-8°C, Protected from air and light, refrigerate or freeze.

## **[ References ]**

[1] Kasimu R, Basnet P, Tezuka Y, *et al. Cheminform*, 2010, 28(38):564-6.

[2] Tezuka Y, Kasimu R, Basnet P, *et al. Chem. Pharm. Bull.*, 1997, 45(8):1306-11.

[3] Lin J T, Wu T , Liao Y, *et al. Central South Pharmacy*, 2007, 5(1):22-4.

## **[ Contact ]**

### **Address:**

S5-3 Building, No. 111, Dongfeng Rd.,  
Wuhan Economic and Technological Development Zone,  
Wuhan, Hubei 430056,  
China

**Email:** [info@chemfaces.com](mailto:info@chemfaces.com)

**Tel:** +86-27-84237783

**Fax:** +86-27-84254680

**Web:** [www.chemfaces.com](http://www.chemfaces.com)

**Tech Support:** [service@chemfaces.com](mailto:service@chemfaces.com)