

Isodeoxyelephantopin Datasheet

5th Edition (Revised in January, 2017)

[Product Information]

Name: Isodeoxyelephantopin

Catalog No.: CFN97745

Cas No.: 38927-54-7

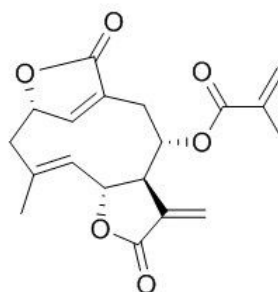
Purity: > 95%

M.F: C₁₉H₂₀O₆

M.W: 344.36

Physical Description: Powder

Synonyms: (2-Cyanophenyl)methyl acetate.



[Intended Use]

1. Reference standards;
2. Pharmacological research;
3. Synthetic precursor compounds;
4. Intermediates & Fine Chemicals;
5. Others.

[Source]

The herbs of *Elephantopus scaber* Linn.

[Biological Activity or Inhibitors]

Isodeoxyelephantopin(ESI) has been shown anticancer effects in various cancer cell lines,

it exhibits apoptosis mediated cytotoxicity in Nasopharyngeal carcinoma cells.^[1]

Isodeoxyelephantopin can inhibit the proliferation of breast cancer cells and lung carcinoma cells and induce caspase-3-mediated apoptosis and cell cycle arrest in the treated cells.^[2]

Isodeoxyelephantopin inhibits NF-kappaB activation and NF-kappaB-regulated gene expression, which may explain the ability of ESI to enhance apoptosis and inhibit invasion and osteoclastogenesis.^[3]

[Solvent]

Chloroform, Dichloromethane, Ethyl Acetate, DMSO, Acetone, etc.

[HPLC Method]

Not data available.

[Storage]

2-8°C, Protected from air and light, refrigerate or freeze.

[References]

[1] Farha A K, Geetha B S, Nair M S, *et al. Asian J.Pharm.Clin.Res.*, 2013, 6(suppl2): 51-6.

[2] Kabeer F A, Sreedevi G B, Nair M S, *et al. Chinese Medicine*, 2014, 9(1):14.

[3] Ichikawa H, Nair M S, Takada Y, *et al. Clin.Cancer Res.*, 2006, 12(19):5910-8.

[Contact]

Address:

S5-3 Building, No. 111, Dongfeng Rd.,
Wuhan Economic and Technological Development Zone,
Wuhan, Hubei 430056,
China

Email: info@chemfaces.com

Tel: +86-27-84237783

Fax: +86-27-84254680

Web: www.chemfaces.com

Tech Support: service@chemfaces.com