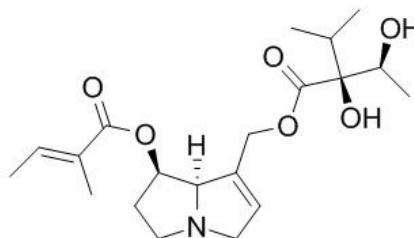


## Symlandine Datasheet

4<sup>th</sup> Edition (Revised in July, 2016)**[ Product Information ]****Name:** Symlandine**Catalog No.:** CFN00261**Cas No.:** 74410-74-5**Purity:** > 95%**M.F:** C<sub>20</sub>H<sub>31</sub>NO<sub>6</sub>**M.W:** 381.47**Physical Description:** Powder

**Synonyms:** (1R,7aR)-7-({[(2S,3S)-2,3-dihydroxy-2-(propan-2-yl)butanoyl]oxy}methyl)-2,3,5,7a-tetrahydro-1H-pyrrolizin-1-yl (2Z)-2-methylbut-2-enoate; 2-Butenoic acid, 2-methyl-, (1R,7aR)-7-[[[(2S,3S)-2,3-dihydroxy-2-(1-methylethyl)-1-oxobutyl]oxy]methyl]-2,3,5,7a-tetrahydro-1H-pyrrolizin-1-yl ester, (2Z)-.

**[ Intended Use ]**

1. Reference standards;
2. Pharmacological research;
3. Synthetic precursor compounds;
4. Intermediates & Fine Chemicals;
5. Others.

**[ Source ]**The herbs of *Senecio scandens*.

## **[ Biological Activity or Inhibitors ]**

Symlandine, 7-acetylintermedine, and 7-acetyllycopsamine are pyrrolizidine alkaloids, isolated from comfrey, can produce hepatotoxicity in livestock and humans and carcinogenicity in experimental animals.<sup>[1]</sup>

## **[ Solvent ]**

Chloroform, Dichloromethane, Ethyl Acetate, DMSO, Acetone, etc.

## **[ HPLC Method ]<sup>[2]</sup>**

Mobile phase: Acetonitrile- 15mM Ammonia solution ,gradient elution ;

Flow rate: 1.0 ml/min;

Column temperature: 25 °C;

The wave length of determination: 220 nm.

## **[ Storage ]**

2-8°C, Protected from air and light, refrigerate or freeze.

## **[ References ]**

[1] Mei N, Guo L, Fu PP, *et al. J.Toxicol. Env. Heal. B*, 2010, 13(7-8):509-26.

[2] Mroczek T, Ndjoko-loset K, Głowniak K, *et al. Anal. Chim. Acta*, 2006, 566(2):157-66.

## **[ Contact ]**

### **Address:**

S5-3 Building, No. 111, Dongfeng Rd.,  
Wuhan Economic and Technological Development Zone,  
Wuhan, Hubei 430056,  
China

**Email:** [info@chemfaces.com](mailto:info@chemfaces.com)

**Tel:** +86-27-84237783

**Fax:** +86-27-84254680

**Web:** [www.chemfaces.com](http://www.chemfaces.com)

**Tech Support:** [service@chemfaces.com](mailto:service@chemfaces.com)